



Reflashing the INLINE 5 Adapter

Page 2: Reflashing INLINE 5 Adapter

Page 7: Recovering INLINE 5 Adapter

NOTE: PLEASE DO NOT ATTEMPT TO REFLASH THE ADAPTER BEFORE READING THIS DOCUMENT.


IMPROPER REFLASH OR USE CAN RESULT IN ERRONEOUS DATA AND MALFUNCTIONING EQUIPMENT.

Please contact your local Cummins distributor if you need additional assistance in reflashing INLINE 5 Adapter

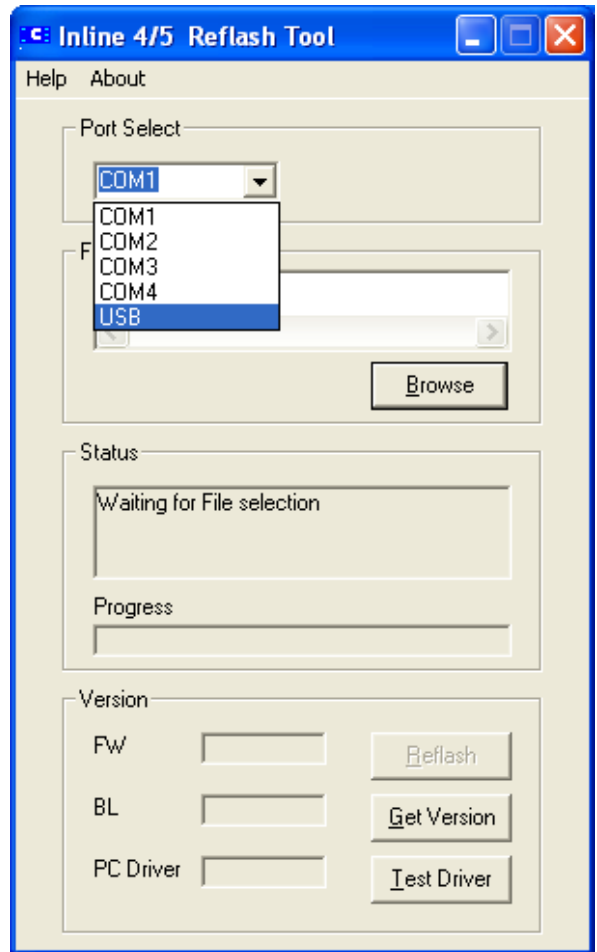
Reflashing INLINE 5 Adapter

Adapters often require their firmware to be reloaded or upgraded with a new firmware. The Reflash Tool provides a convenient way to reflash the INLINE 5 adapter with the desired firmware.

Note: If updating from **5.30 Firmware** and previous versions, Administrative rights are required to install the **INLINE 5 USB driver**.

-
- 1 To begin:
 1. Power up the INLINE 5 Adapter. This can be done by connecting the adapter to a Cummins Engine.
 2. Click  and go to **All Programs > Intellect > INLINE 4-5 Reflash Tool**.

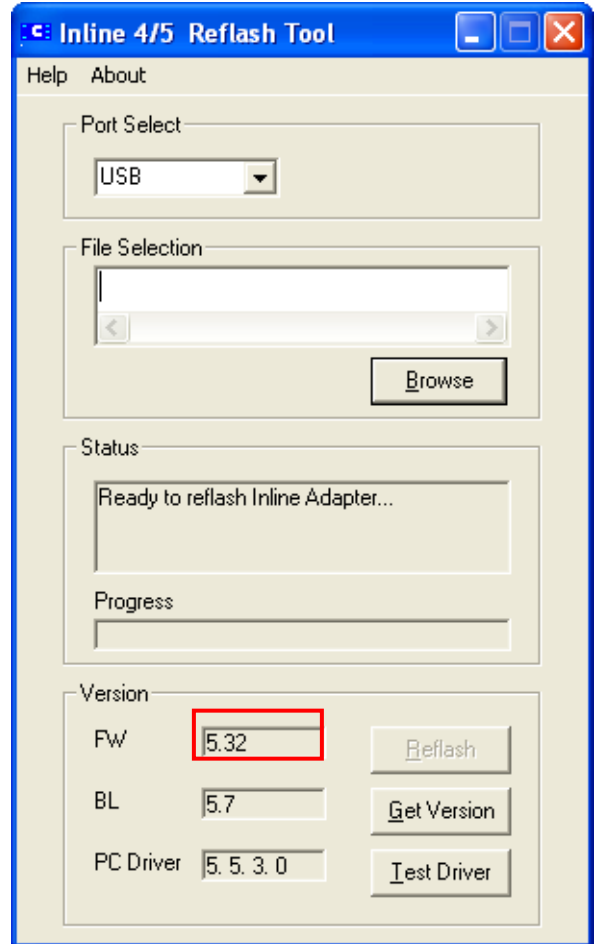
-
- 2 Connect the INLINE 5 adapter to the computer, select the correct port under **Port Select** and click **Get Version**. The Inline 4/5 Reflash Tool will display the FW (Firmware), BL (Boot loader) and PC driver under **Version**.



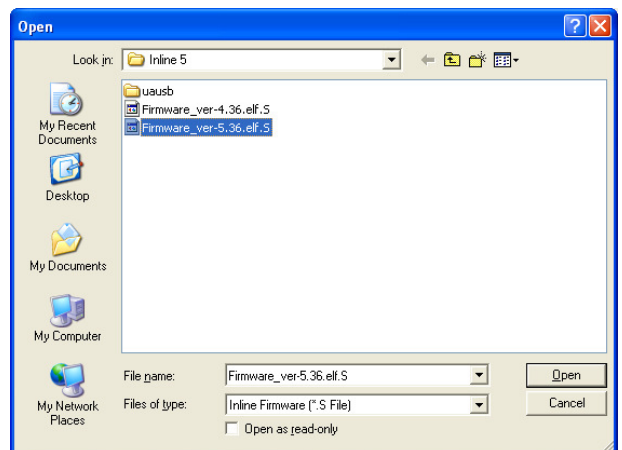
Reflashing INLINE 5 Adapter

(continued)

- 2a** If the value for **FW** is **5.36** under **Version** then the Reflash is not necessary. If **FW** has a value other than **5.36** then click **Browse** and go to Step 2b.

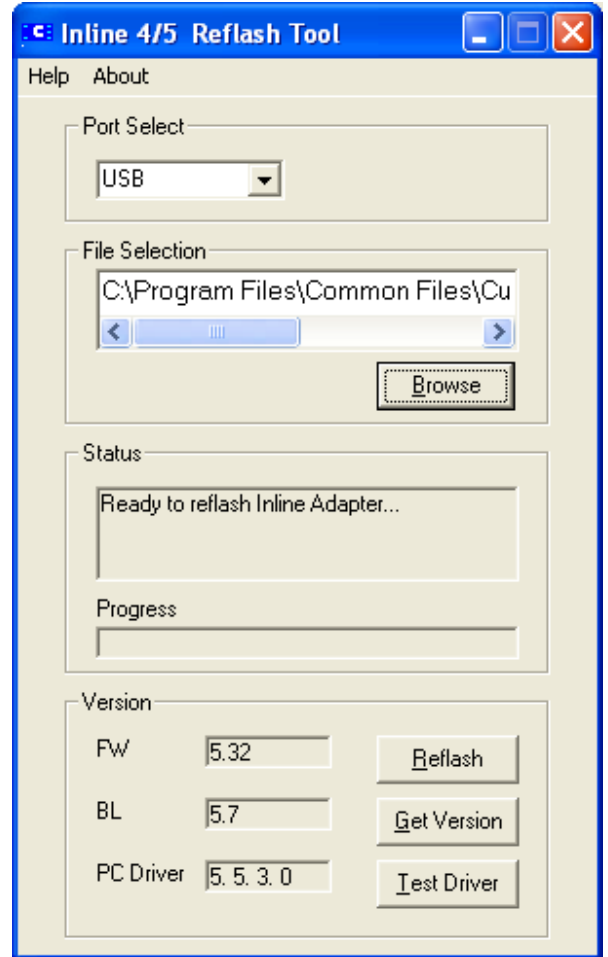


- 2b** Select **Firmware_ver-5.36.elf.S** (C:\Program Files\Common Files\Cummins\Inline 5) and click **Open**.

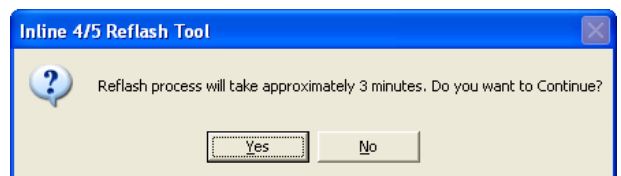


Refashing INLINE 5 Adapter (continued)

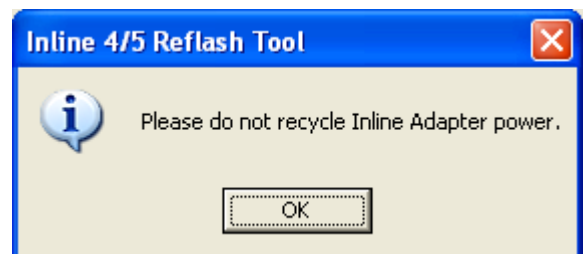
3 Click **Refresh** to begin the Reflash process.



3a Click **Yes** to continue.



3b Click **OK** to start the reflash process

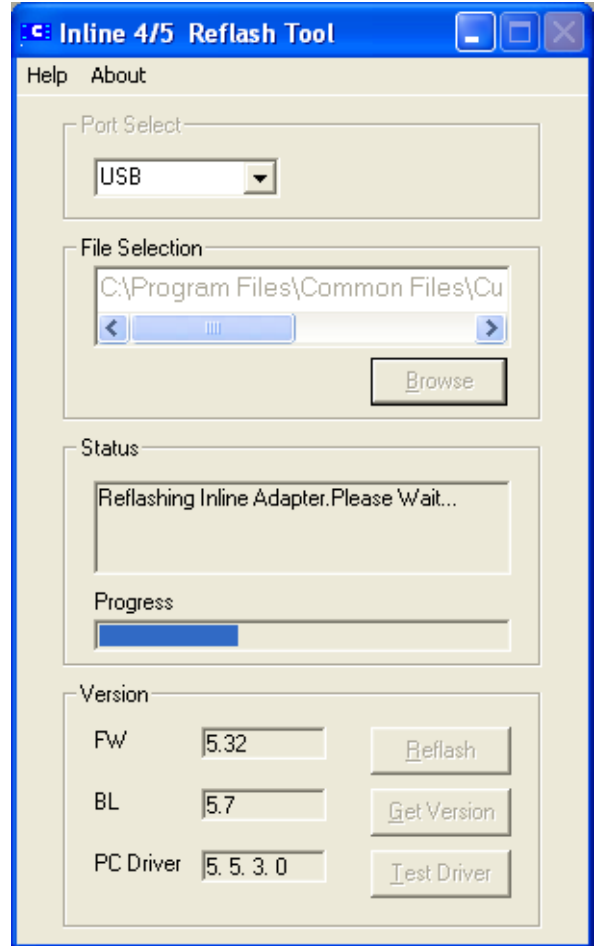


Refashing INLINE 5 Adapter

(continued)

- 4 The Progress bar displays the status of the adapter reflash process.

Note: During the reflash process the USB LED on the adapter will be continuously ON.



- 5 The INLINE 5 Adapter has been successfully reflashied.

The previous firmware and the current firmware versions are displayed.

Click **OK**.


Note: For Step 6, Administrative rights are required to install the INLINE 5 USB driver if updating from **5.30** Firmware and previous versions.



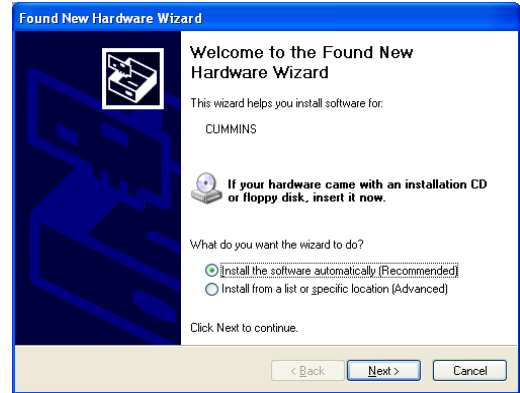
Reflashing INLINE 5 Adapter

(continued)

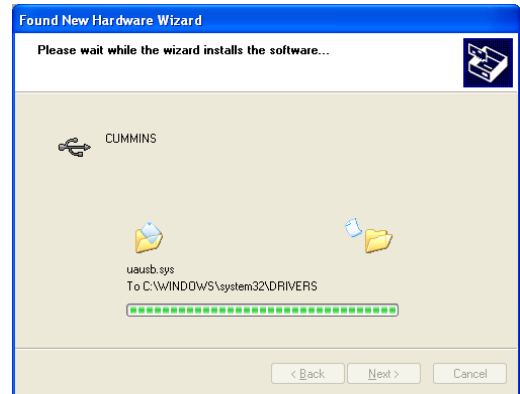
6 After the reflash has been completed, the INLINE 5 Adapter USB Driver may need to be installed if it will be used with the USB port on the PC. The **Found New Hardware Wizard** window will be displayed when the INLINE 5 adapter is physically reconnected.

Select Install the software automatically (Recommended) and click .

Note: This will not be necessary if connecting with the RS-232 Serial cable and COM port on the PC.



7 The Status bar displays the progress as the USB driver is installed.



8 If at anytime the following window appears during the installation, click on **Continue Anyway**.

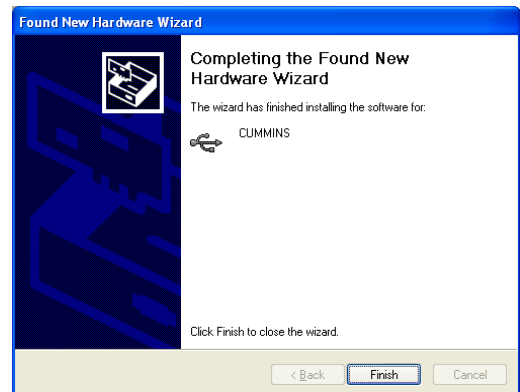


9 The USB driver for the INLINE 5 Adapter has been successfully installed.

The INLINE 5 adapter is now ready for use.

Click  to return to Windows.

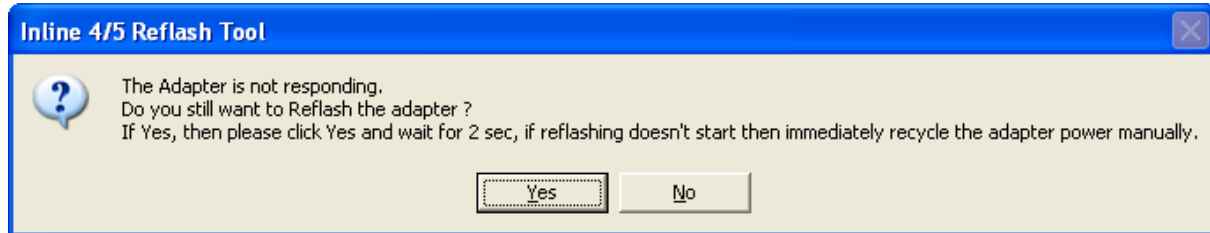
Note: If there is more than one USB port on the PC, connect the Adapter to the other ports and repeat the procedure from step 7. This will configure other USB ports on the PC.



Recovering INLINE 5 Adapter

Use these steps to recover the INLINE 5 Adapter using the Reflash tool when the adapter is not responding.
Note: This can only be performed using RS-232 Serial cable and connecting through the COM port on the PC.

- 1 Click **Reflash** to begin the Reflash process and click **OK** to the message displayed.
- 2 The Inline 4/5 Reflash Tool will try to recover the adapter and display the message to initiate the recovery process.



- 3 Click **Yes** to start the recovery process or click **No** to stop.
- 4 After clicking **Yes**, if the reflash process does not begin within 2 seconds, recycle the power to the adapter.
Note: Timing is critical and the reflash attempt may fail if not performed after exactly 2 seconds.
- 5 The reflash will start and the Progress bar will display the adapter progress.
- 6 When reflash is complete, the previous firmware and the current version are displayed.

Test Driver

Test Driver in the Inline 4/5 Reflash Tool can be used to verify that the INLINE 5 Software has been properly installed.

- 1 With the INLINE 5 Adapter powered up, connect it to the PC.
- 2 Click on **Test Driver**.
- 3 If **Driver test SUCCESSFUL** appears under **Status**, the INLINE 5 Software has been properly installed.